



# PLTA Pack Trials



## Elite Pack Llama

An **ELITE PACK LLAMA** is your-let's-go-to-the-mountain-top packing partner. Elite means just that; a highly skilled, fully fit companion ready for challenging conditions. These packers carry heavy loads over long distances. They are comfortable traveling off-trail and negotiating difficult obstacles. They will get you there.



### PLTA Pack Trial Requirements

A Pack Trial requires the llama to successfully complete a set of manageability tasks and a field test. These must be completed safely and with decorum. A llama who kicks, spits, shoves, refuses, leaps about or panics, loses points and may be disqualified.

Llamas must successfully complete all tasks, obstacles, and the hike to pass a trial. Multiple trials are required to earn a certificate at any given level. A llama must earn a Master certificate before undertaking an Elite trial.

#### Manageability Tasks

The llama calmly and safely accomplishes haltering, picketing, loading, saddling, and pannier attachment.

#### Field Test

Criterion	Requirements
Age	At least 5 years old
Load (percent of body weight)	25% of body weight
Distance	Ten miles
Elevation Gain	2500 to 3000 feet
Total Number of Obstacles Required	Twenty
Performance Deductions Allowed	Two
Successful Trials Required for Certificate	Two. Must have already earned a Master Pack Llama Certificate

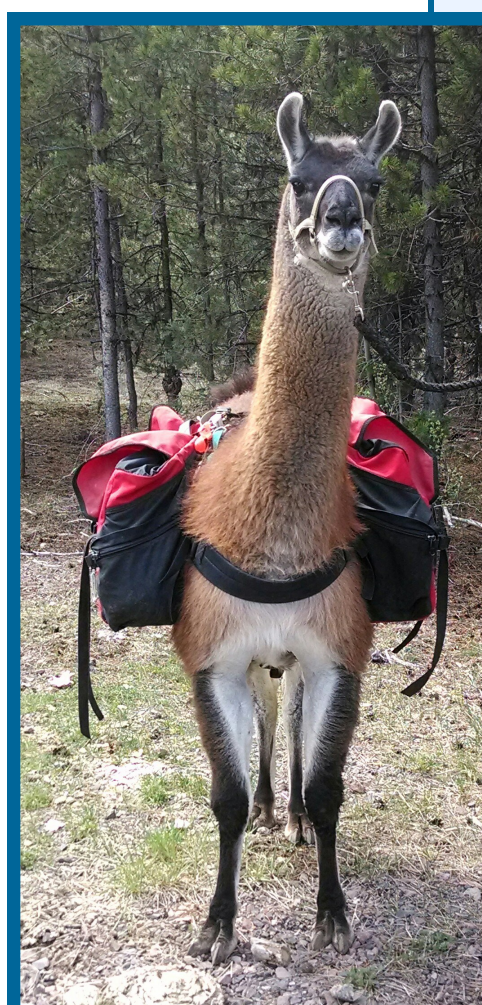
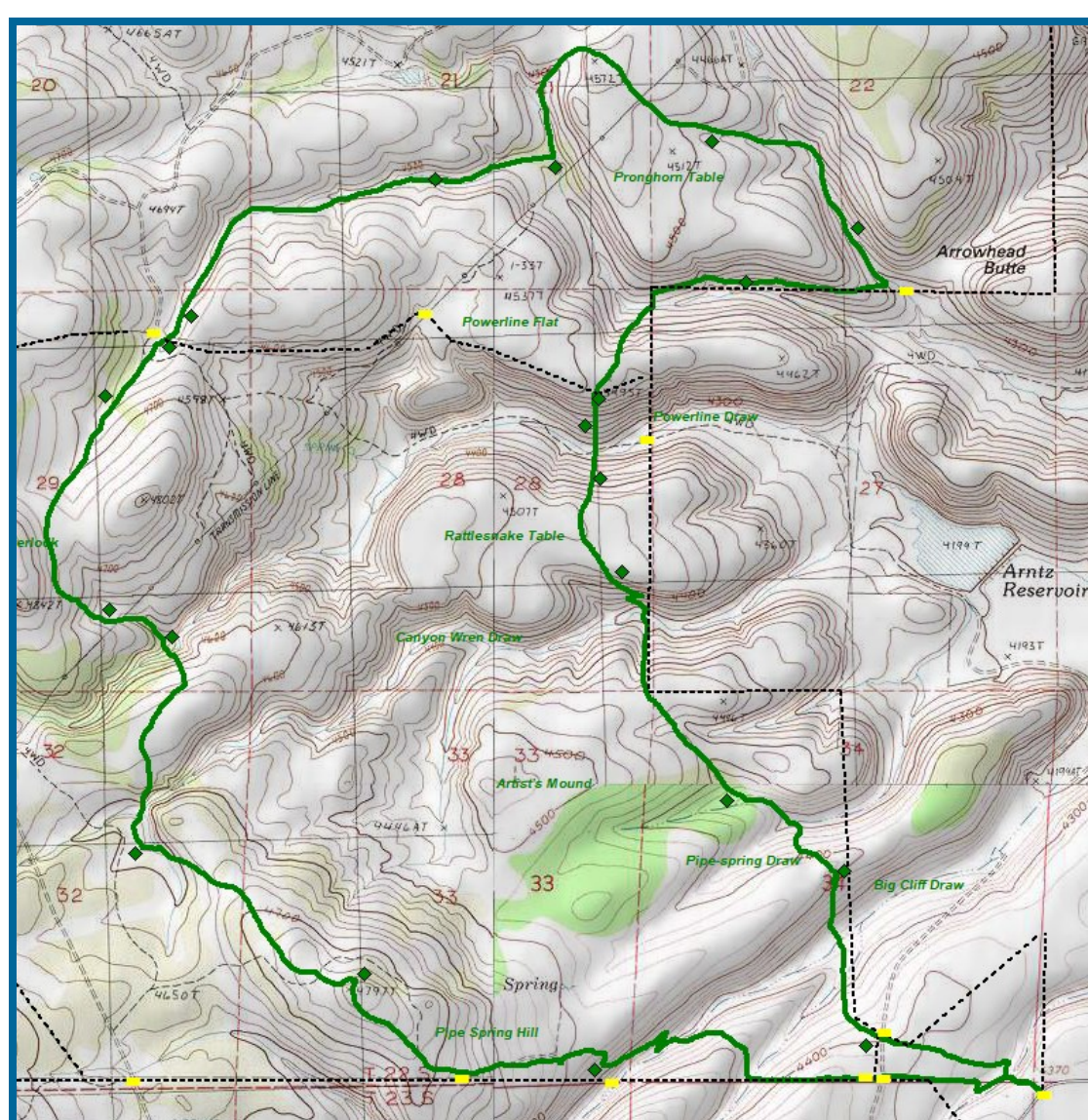


#### Required Obstacles

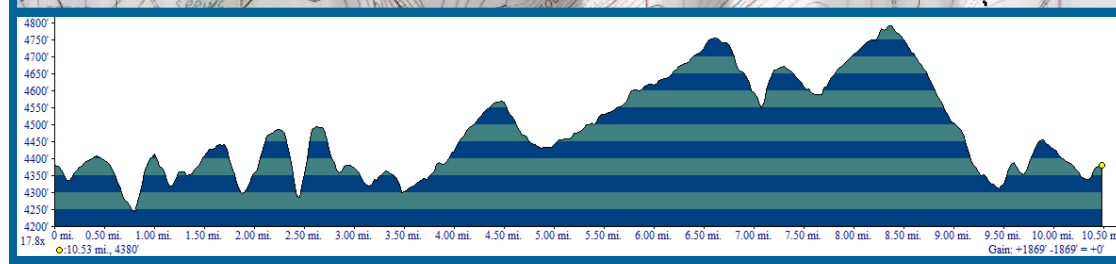
Category	Required Obstacle
Twenty complex obstacles, 13 created from combinations of obstacles from two or more categories	any obstacles appropriate to the trial level

#### Obstacle Categories

- Category 1: Up / Down / Across
- Category 2: Foot Fears
- Category 3: Up/Down/Across
- Category 4: Tight Places
- Category 5: Slippery Slope
- Category 6: Load Management
- Category 7: Trail Hazards



An Elite Packer is truly Something Special



Field Test Course



Pack Llama Trail Association  
Promoting the Working Llama

[www.packllama.org](http://www.packllama.org)

