



PLTA Pack Trials



Master Pack Llama

A **MASTER PACK LLAMA** is your serious-adventure llama, fully fit for long distance hiking under a heavy pack. Masters handle the difficult obstacles found along a poorly maintained trail.



PLTA Pack Trial Requirements

A Pack Trial requires the llama to successfully complete a set of manageability tasks and a field test. These must be completed safely and with decorum. A llama who kicks, spits, shoves, refuses, leaps about or panics, loses points and may be disqualified.

Llamas must successfully complete all tasks, obstacles, and the hike to pass a trial. Multiple trials are required to earn a certificate at any given level. A llama must earn a Master certificate before undertaking an Elite trial.

Manageability Tasks

The llama calmly and safely accomplishes haltering, picketing, loading, saddling, and pannier attachment.

Field Test

Criterion	Requirements
Age	At least 5 years old
Load (percent of body weight)	20% of body weight
Distance	Eight miles
Elevation Gain	1500 to 2000 feet
Total Number of Obstacles Required	Fifteen
Performance Deductions Allowed	Two
Successful Trials Required for Certificate	Four, or three if the llama has an Advanced Certificate

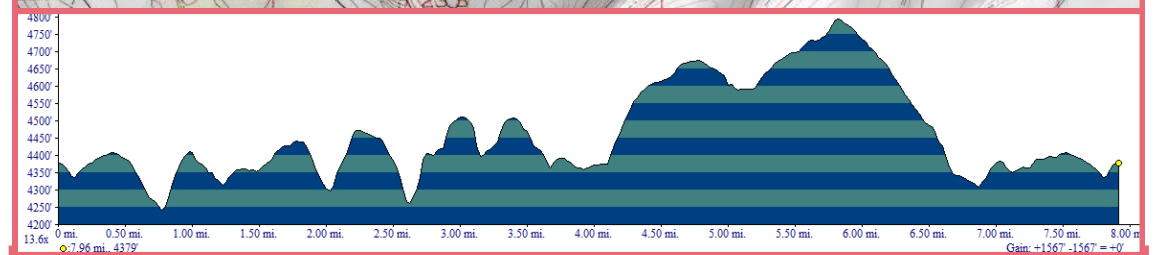
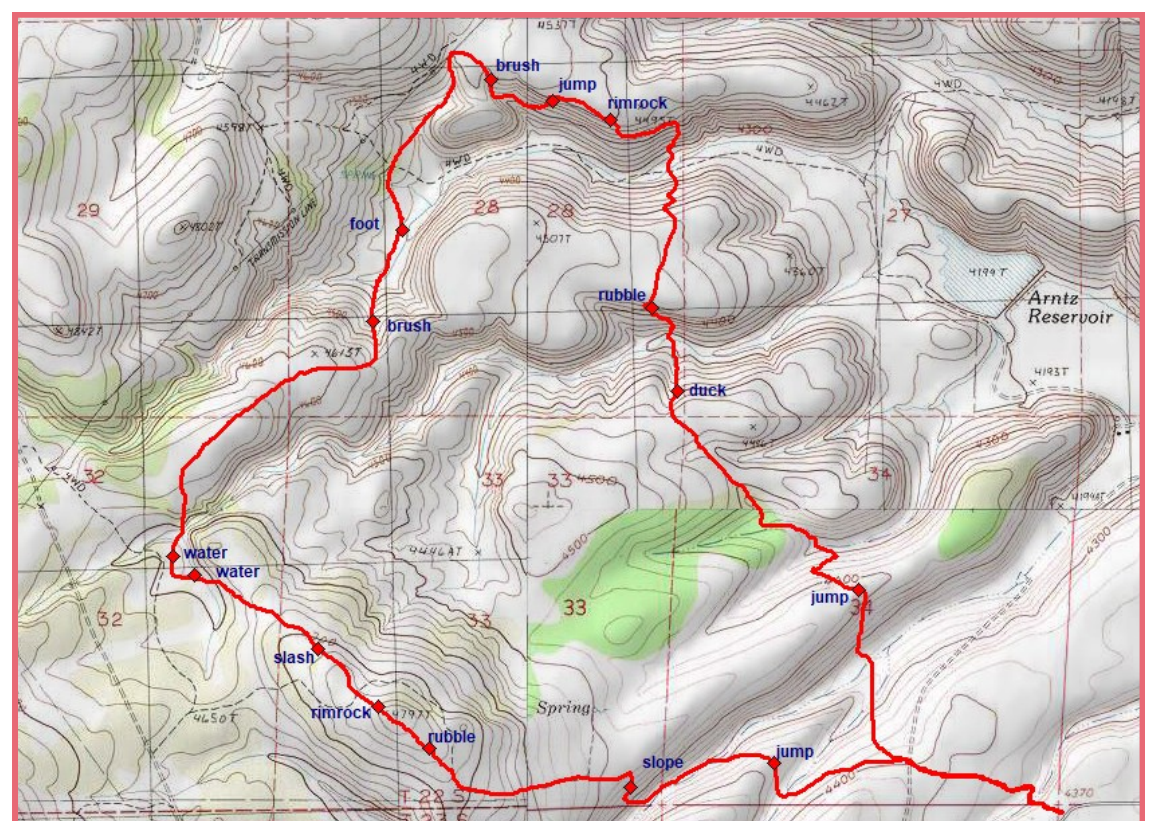


Required Obstacles

Category	Required Obstacle
Up/Over/Across:	any obstacle from category
Foot Fear	water (if possible)
Picking One's Way	deadfall
Picking One's Way	rubble
Tight Places	brush
Slippery Slope	any obstacle from category
Load Management	panniers off and foot inspection
Eight complex obstacles, each created from combinations of obstacles from two or more categories	any obstacle appropriate to the trial level

Obstacle Categories

- Category 1: Up / Down / Across
- Category 2: Foot Fears
- Category 3: Up/Down/Across
- Category 4: Tight Places
- Category 5: Slippery Slope
- Category 6: Load Management
- Category 7: Trail Hazards



Field Test Course



Pack Llama Trail Association
Promoting the Working Llama
www.packllama.org

